

# Gonzen Alfredo Häberli

Openness factor 4%  
Trevira CS woolen mélange look



**kvadrat shade**

## Specification details

|                 |                                                                                                                   |
|-----------------|-------------------------------------------------------------------------------------------------------------------|
| Openness factor | 4%                                                                                                                |
| Composition     | 100% Trevira CS                                                                                                   |
| Fabric width    | 300 cm (118 inches)                                                                                               |
| Weight          | 180 g/m <sup>2</sup>                                                                                              |
| Thickness       | 0.5 mm                                                                                                            |
| IR emissivity   | 0.90                                                                                                              |
| Light fastness  | 6-7 (ISO105-B02)                                                                                                  |
| Fire tests      | BS 5867 part 2 type B, DIN 4102 B1, EN 13773 class 1, IMO FTP code 2010: part 7, NF P 92 507 M1, NFPA 701         |
| Environment     | GREENGUARD Gold, Health Product Declaration (HPD). Comply with REACH. Free of intentionally added PFAS. PVC free. |

## Technical details

| Colour | Optical properties acc. to EN 14500:2021 and EN 14501:2021 |        |        |        |         |    |                      |
|--------|------------------------------------------------------------|--------|--------|--------|---------|----|----------------------|
|        | Number                                                     | Rs (%) | Ts (%) | Tv (%) | Tuv (%) | Ra | Glare control rating |
|        | 100                                                        | 50     | 45     | 45     | 21      | 97 | 0                    |
|        | 120                                                        | 26     | 25     | 23     | 15      | 98 | 0                    |
|        | 160                                                        | 13     | 14     | 12     | 10      | 98 | 0                    |
|        | 190                                                        | 4      | 4      | 4      | 4       | 98 | 1                    |
|        | 220                                                        | 47     | 34     | 32     | 12      | 85 | 0                    |
|        | 260                                                        | 24     | 18     | 14     | 11      | 93 | 0                    |
|        | 560                                                        | 19     | 12     | 5      | 5       | 77 | 1                    |
|        | 760                                                        | 14     | 10     | 5      | 5       | 93 | 1                    |

| Colour | Solar control double glazing G |               |                                 | Solar control triple glazing I |               |                                 |             |
|--------|--------------------------------|---------------|---------------------------------|--------------------------------|---------------|---------------------------------|-------------|
|        | Number                         | gtot/SHGC (%) | Utot-value (W/m <sup>2</sup> K) | Tv, tot (%)                    | gtot/SHGC (%) | Utot-value (W/m <sup>2</sup> K) | Tv, tot (%) |
|        | 100                            | 19            | 0.84                            | 36                             | 20            | 0.56                            | 34          |
|        | 120                            | 25            | 0.84                            | 17                             | 25            | 0.56                            | 16          |
|        | 160                            | 28            | 0.84                            | 8                              | 27            | 0.56                            | 8           |
|        | 190                            | 30            | 0.84                            | 3                              | 28            | 0.56                            | 2           |
|        | 220                            | 21            | 0.84                            | 26                             | 21            | 0.56                            | 24          |
|        | 260                            | 27            | 0.84                            | 10                             | 26            | 0.56                            | 9           |
|        | 560                            | 29            | 0.84                            | 4                              | 28            | 0.56                            | 4           |
|        | 760                            | 28            | 0.84                            | 4                              | 28            | 0.56                            | 3           |

**Rs:** Solar reflection | **Ts:** Solar transmission | **As:** Solar absorption calculation:  $100 - Rs - Ts = As$

**Tv:** Visual light transmission | **Tuv:** UV transmission | **Ra:** Colour rendering index

**Glazing G:**  $g=33\%$  /  $U=1.0$  /  $Tv=70\%$  (acc. to EN14501: 2021) | **Glazing I:**  $g=31\%$  /  $U=0.6$  /  $Tv=64\%$  (with ref. panes acc. to EN 14501:2021)

**gtot/SHGC:** Solar heat gain through total fenestration | **Utot:** Thermal heat loss (or gain) through total fenestration

**Tv, tot:** Total light transmission through total fenestration

# Gonzen



560



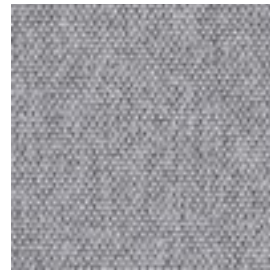
220



260



100



120



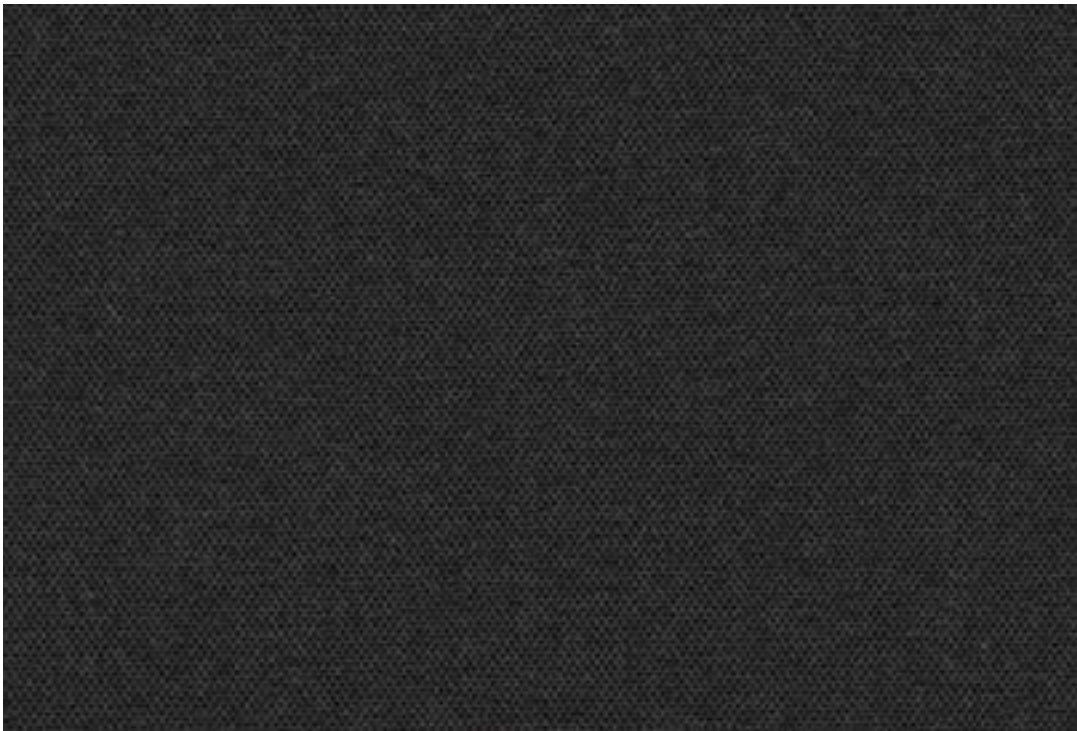
760



160



190



## Gonzen

Design: Alfredo Häberli

DK

**Anvendelse** Rullegardin.

**Beskrivelse** 100% Trevira CS. Bredde 300 cm. Vægt 180 g/m<sup>2</sup>. Tykkelse 0.5 mm. Garnfarvet. Nuanceforskel kan forekomme.

**Lysægtighed** 6-7 (ISO 105-B02).

**Flammesikring** BS 5867 part 2 type B. DIN 4102 B1. EN 13 773 class 1. IMO FTP Code 2010 Part 7. NF P 92 507 M1. NFPA 701. (Kopi af testrapport kan rekvireres).

**Vedligeholdelse** Se ISO symboler. Rengør med en tør eller opvredet klud. Brug kun rent vand. Kan også børstes eller støvsuges (nedsat sug) med børste mundstykke. Ved kraftigere tilsmudsning anbefales det at kontakte professionel renseri.

UK

**Application** Roller blind.

**Description** 100% Trevira CS. Width 300 cm (118 inches). Weight 180 g/m<sup>2</sup>. Thickness 0.5 mm. Yarn dyed. Colour differences may occur.

**Lightfastness** 6-7 (ISO 105-B02).

**Flame resistance** BS 5867 part 2 type B. DIN 4102 B1. EN 13 773 class 1. IMO FTP Code 2010 Part 7. NF P 92 507 M1. NFPA 701. (Copy of test report available).

**Care** Please see the ISO symbols. Clean with a dry or moist wrung cloth. Only use clean water. Can also be brushed or carefully vacuumed (reduce suction power) with a brush nozzle. In case of considerable staining, we recommend contacting a professional dry cleaner.

DE

**Anwendungsbereich** Rollos.

**Beschreibung** 100% Trevira CS. Breite 300 cm. Gewicht 180 g/m<sup>2</sup>. Dicke 0.5 mm. Garngefärbt. Farbunterschiede können vorkommen.

**Lichtechtheit** 6-7 (ISO 105-B02).

**Flammschutz** BS 5867 part 2 type B. DIN 4102 B1. EN 13 773 class 1. IMO FTP Code 2010 Part 7. NF P 92 507 M1. NFPA 701. (Testbericht verfügbar).

**Pflege** Siehe ISO Pflegesymbole. Mit einem trockenen oder feuchten, ausgedrückten Tuch reinigen. Nur sauberes Wasser verwenden. Reinigung durch vorsichtiges Abbürsten oder saugen mit Bürstenaufsatz und reduzierter Leistung möglich. Bei starker Verschmutzung empfehlen wir einen professionellen Reinigungsdienst.

NL

**Toepassing** Rolgordijn.

**Omschrijving** 100% Trevira CS. Breedte 300 cm. Gewicht 180 g/m<sup>2</sup>. Dikte 0.5 mm. Garengeverfd. Kleurverschillen kunnen optreden.

**Lichtechtheid** 6-7 (ISO 105-B02).

**Brandwerendheid** BS 5867 part 2 type B. DIN 4102 B1. EN 13 773 class 1. IMO FTP Code 2010 Part 7. NF P 92 507 M1. NFPA 701. (Op aanvraag sturen wij u graag een kopie van het testrapport toe).

**Onderhoud** Zie de ISO symbolen. Schoon deppen met een droge of goed uitgewrongen, vochtige doek. Alleen schoon water gebruiken. Kan ook schoongemaakt worden door middel van een borstel of een stofzuiger met borstelstuk op halve kracht. In het geval van serieuze vlekvorming, raden we aan contact op te nemen met een professionele reiniger.

FR

**Domaine d'utilisation** Store.

**Description** 100% Trevira CS. Largeur 300 cm. Poids 180 g/m<sup>2</sup>. Épaisseur 0.5 mm. Teinture sur fil. Ecart des coloris possibles.

**Résistance à la lumière** 6-7 (ISO 105-B02).

**Normes au feu** BS 5867 part 2 type B. DIN 4102 B1. EN 13 773 class 1. IMO FTP Code 2010 Part 7. NF P 92 507 M1. NFPA 701. (La copie du compte rendu des tests est disponible sur demande).

**Entretien** Voir les symboles ISO. Nettoyez avec un chiffon sec ou chiffon humide bien essoré. Utilisez uniquement de l'eau propre. Le tissu peut aussi être brossé ou aspire avec soin (puissance d'aspiration réduite) avec un embout en forme de brosse. Dans le cas où le tissu a été fortement taché, nous suggérons de contacter un pressing professionnel.

IT

**Destinazione d'uso** Tende a rullo.

**Caratteristiche** 100% Trevira CS. Altezza 300 cm. Peso 180 g/m<sup>2</sup>. Spessore 0.5 mm. Tinto in filo. Possibili differenze per colore.

**Resistenza alla luce** 6-7 (ISO 105-B02).

**Ignifugazione** BS 5867 part 2 type B. DIN 4102 B1. EN 13 773 class 1. IMO FTP Code 2010 Part 7. NF P 92 507 M1. NFPA 701. (Disponibile copia del test).

**Manutenzione** Per favore seguire simboli ISO. Pulire con un panno asciutto o umido strizzato. Utilizzare solo acqua pulita. Può anche essere spazzolato oppure accuratamente aspirato (ridurre la potenza di aspirazione) con un ugello a spazzola. In caso di macchie considerevoli, si consiglia di contattare un lavasecco professionale.

ES

**Aplicación** Estor.

**Descripción** 100% Trevira CS. Anchura 300 cm. Peso 180 g/m<sup>2</sup>. Grosor 0.5 mm. Teñido en hilo. Posibles variaciones de color.

**Resistencia a la luz** 6-7 (ISO 105-B02).

**Resistencia al fuego** BS 5867 part 2 type B. DIN 4102 B1. EN 13 773 class 1. IMO FTP Code 2010 Part 7. NF P 92 507 M1. NFPA 701. (Copia del informe de ensayos disponible).

**Limpieza** Consulte los símbolos ISO. Limpiar con un paño seco o ligeramente humedecido. Utilizar únicamente agua. También se puede cepillar o aspirar con cuidado (baja intensidad de succión) con una boquilla de cepillo. En caso de manchas considerables, recomendamos contactar con un profesional de limpieza.

SE

**Användning** Rullgardin.

**Beskrivning** 100% Trevira CS. Bredd 300 cm. Vikt 180 g/m<sup>2</sup>. Tjocklek 0.5 mm. Garnfärgad. Viss nyansskillnad kan förekomma.

**Ljushärdighet** 6-7 (ISO 105-B02).

**Flammskydd** BS 5867 part 2 type B. DIN 4102 B1. EN 13 773 class 1. IMO FTP Code 2010 Part 7. NF P 92 507 M1. NFPA 701. (Kopia av testrapport finns tillgänglig vid förfrågan).

**Underhåll** Se ISO symboler. Rengör med en torr eller fuktad trasa. Använd endast rent vatten. Kan även borstas eller försiktigt dammsugas med ett borstmunstycke. I händelse av fläckar rekommenderar vi att du lämnar in rullgardinen till kemtvätt.

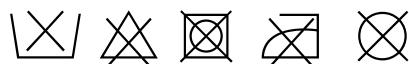
ZH

产品应用 遮光卷帘。

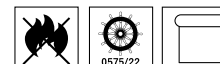
产品详情 100% 德国阻燃丝。幅宽：300厘米。克重：180克/平方米。厚度：0.5毫米。色织。可能出现色差。

日晒色牢度 英国标准BS 5867 第2部分B级，德国标准DIN 4102 B1，欧洲标准EN 13773 1级，国际海事组织标准 IMO FTP Code 2010 第7部分，法国标准NF P 92 507 M1，美国标准NFPA 701。（可提供检测报告副本）。

保养须知 请参照ISO标识。用干布或拧干的湿布清洁。只可用清水。也可用毛刷或毛刷吸嘴（减少吸力）小心清理。如脏污较严重，建议联系专业干洗服务。



Contact and further information kvadrat.dk



5 year warranty

### **Gonzen**

*Gonzen* by Alfredo Häberli has a refined woollen expression, inspired by fine tailoring. As a non-metallised textile, this roller blind textile offers a semi-open view out while bringing warmth and softness to interior spaces.

The colour range moves from calm neutrals to warmer shades and deep indigo tones, allowing *Gonzen* to blend quietly into its surroundings or add subtle character, depending on the setting.

### **Alfredo Häberli**

Alfredo Häberli was born in Buenos Aires, Argentina, in 1964. He moved to Switzerland in 1977 where he completed his training as industrial designer at Höhere Schule für Gestaltung in Zürich in 1991.

He started his own studio in 1991 and today boasts a versatile portfolio comprising exhibition concepts and design of industrially produced everyday articles and even architectural projects and technically sophisticated pieces of furniture.

According to Alfredo Häberli, he gets his ideas from everyday life. He collects themes that may have potential, and a product must materialise in just three to five sentences in order for the idea to be clear and applicable.

One of his life philosophies is 'to observe is the most beautiful way of thinking'. 'In the same object, I always see or discover new things'. The shape and the details of his design are a consequence of meticulousness and repeated contemplation during the development process.