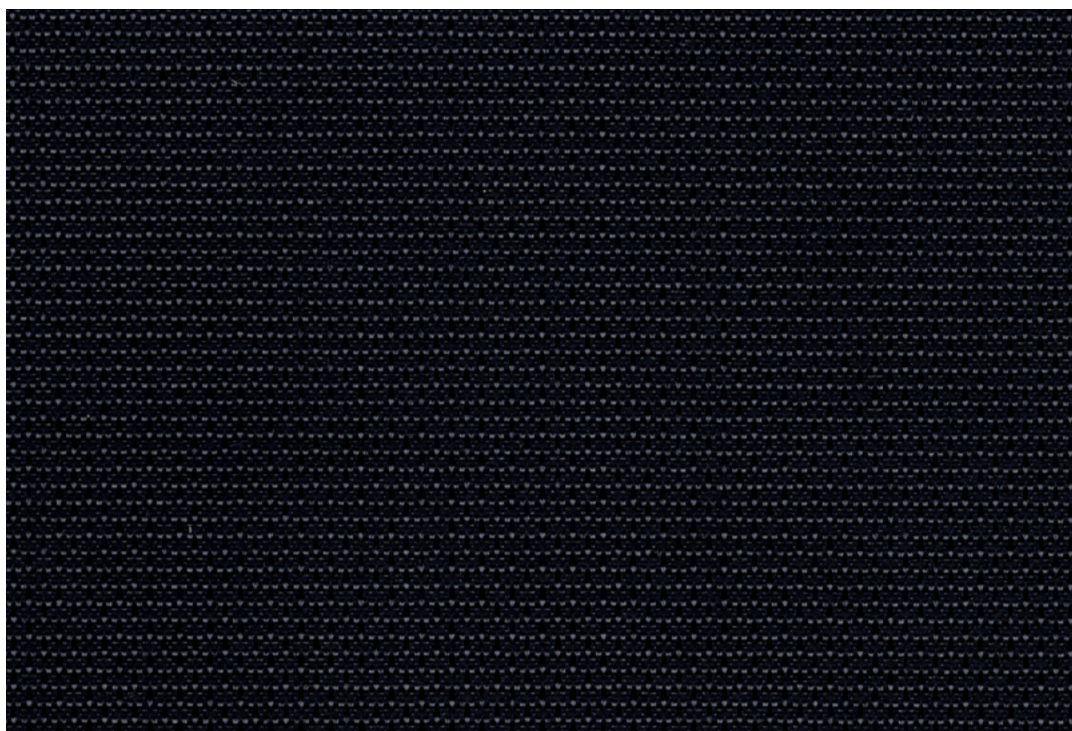


Enviroscreen

Openness factor 2%
Solar reflection 74%
Cradle to Cradle certified



Specification details

Openness factor	2%
Composition	100% polyester inherent FR, aluminium backing
Fabric width	Max. 300 cm (118 inches)
Weight	220 g/m ²
Thickness	0.46 mm
IR emissivity metal side	0.19
Light fastness	Exterior 7-8 (ISO105-B02)
Fire tests	EN 13501-1 (B-s1, d0), BS 5867 part 2 type B, GB 8624 B1, DIN 4102 B1, NFPA 701, AS/NZS 1530.3 (0-0-0-1)
Environment	Cradle to Cradle (C2C) Bronze, GREENGUARD Gold, STANDARD 100 Class IV by OEKO-TEX®, Health Product Declaration (HPD). Comply with REACH and RoHS2. Halogen free, Phthalate free, Formaldehyde free, Antimicrobials free, PVC free.

Technical details

Colour	Optical properties acc. to EN 14500:2021 and EN 14501:2021					
	Rs (%)	Ts (%)	Tv (%)	Tuv (%)	Ra	Glare control rating
100	74	4	4	2	99	3
150	74	3	3	2	99	3
180	74	3	2	2	98	3
190	74	3	2	2	97	3
210	74	4	3	2	97	3
230	74	3	3	2	96	3

Colour	Solar control double glazing G			Solar control triple glazing I		
	gtot/SHGC (%)	Utot-value (W/m ² K)	Tv, tot (%)	gtot/SHGC (%)	Utot-value (W/m ² K)	Tv, tot (%)
100	12	0.72	3	14	0.50	3
150	12	0.72	2	14	0.49	2
180	12	0.72	2	14	0.49	2
190	12	0.72	2	14	0.49	2
210	12	0.72	3	14	0.50	3
230	12	0.72	3	14	0.50	2

Rs: Solar reflection | **Ts:** Solar transmission | **As:** Solar absorption calculation: $100 - Rs - Ts = As$

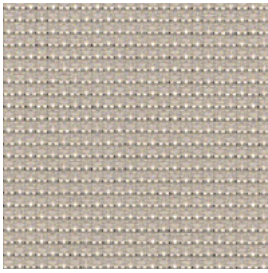
Tv: Visual light transmission | **Tuv:** UV transmission | **Ra:** Colour rendering index

Glazing G: $g=33\%$ / $U=1.0$ / $Tv=70\%$ (acc. to EN14501: 2021) | **Glazing I:** $g=31\%$ / $U=0.6$ / $Tv=64\%$ (with ref. panes acc. to EN 14501:2021)

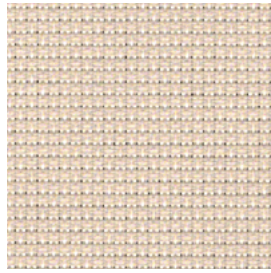
gtot/SHGC: Solar heat gain through total fenestration | **Utot:** Thermal heat loss (or gain) through total fenestration

Tv, tot: Total light transmission through total fenestration

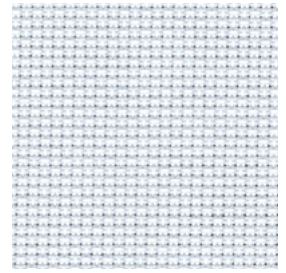
Enviroscreen



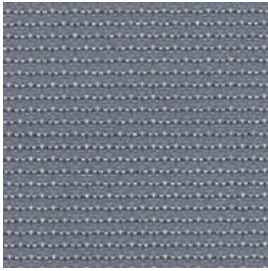
230



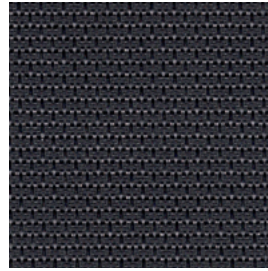
210



100



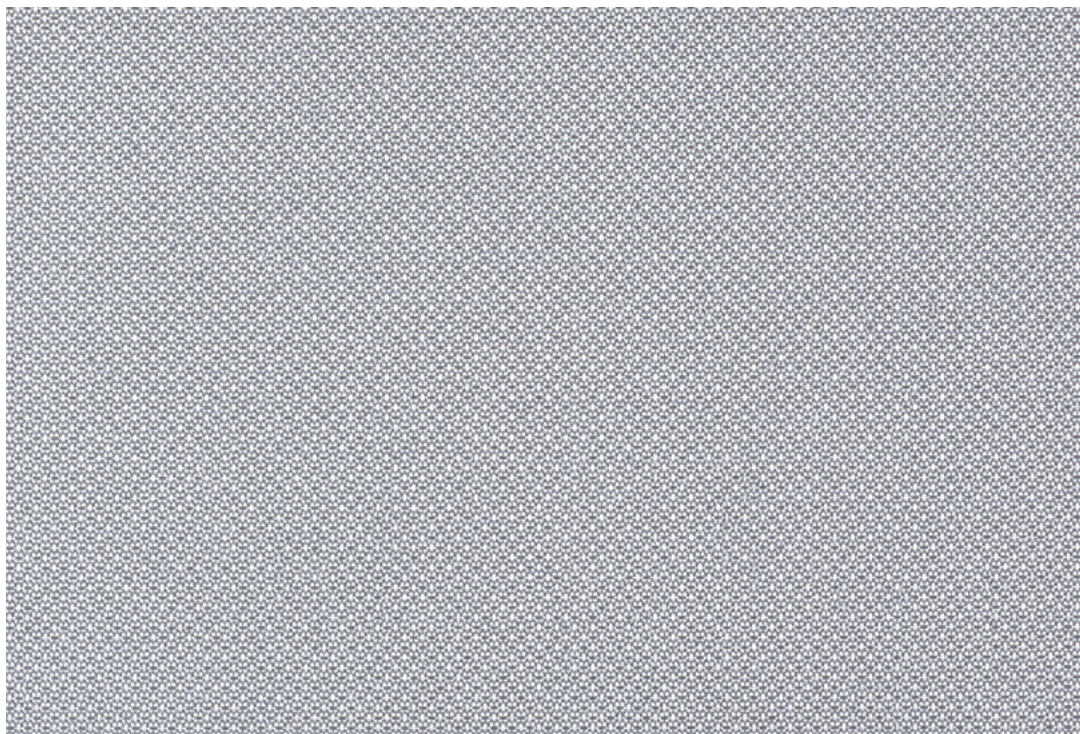
150



180



190



Enviroscreen

DK

Anvendelse Rullegardin.

Beskrivelse 100% polyester inherent FR. Alubelægning. Bredde max. 300 cm. Vægt 220 g/m². Tykkelse 0.46 mm. Transfer tryk. Nuanceforskel kan forekomme.

Lysægtthed Udvendigt 7-8 (ISO 105-B02).

Flammesikring EN 13501-1 (B-s1, d0), BS 5867 part 2 type B, GB 8624 B1, DIN 4102 B1, NFPA 701, AS/NZS 1530.3 (0-0-0-1). (Kopi af testrapport kan rekvireres).

Vedligeholdelse Se ISO symboler. Kan børstes eller støvsuges (nedsat sug) med børstemundstykke. Ved kraftigere tilsmudsning anbefales det at kontakte et professionelt renseri.

UK

Application Roller blind.

Description 100% polyester inherent FR. Aluminium backing. Width max. 300 cm (118 inches). Weight 220 g/m². Thickness 0.46 mm. Transfer print. Colour differences may occur. **Lightfastness** Exterior 7-8 (ISO 105-B02).

Flame resistance EN 13501-1 (B-s1, d0), BS 5867 part 2 type B, GB 8624 B1, DIN 4102 B1, NFPA 701, AS/NZS 1530.3 (0-0-0-1). (Copy of test report available).

Care See ISO symbols. Can be brushed or carefully vacuumed (reduced suction power) with a brush nozzle. In case of considerable staining, we recommend contacting a professional dry cleaner.

DE

Anwendungsbereich Rollos.

Beschreibung 100% Polyester inherent FR. Alubedampft. Breite max. 300 cm. Gewicht 220 g/m². Dicke 0.46 mm. Transferdruck. Farbunterschiede können vorkommen.

Lichtechtheit Äußeres 7-8 (ISO 105-B02).

Flammschutz EN 13501-1 (B-s1, d0), BS 5867 part 2 type B, GB 8624 B1, DIN 4102 B1, NFPA 701, AS/NZS 1530.3 (0-0-0-1). (Testbericht verfügbar).

Pflege Siehe ISO Pflegesymbole. Reinigung durch vorsichtiges Abbürsten oder saugen mit Bürstenaufsatz und reduzierter Leistung möglich. Bei starker Verschmutzung empfehlen wir einen professionellen Reinigungsdienst.

NL

Toepassing Rolgordijn.

Omschrijving 100% polyester inherent FR. Aluminium backing. Breedte max. 300 cm. Gewicht 220 g/m². Dikte 0.46 mm. Transfer print. Kleurverschillen kunnen optreden.

Lichtechtheid Exterieur 7-8 (ISO 105-B02).

Brandwerendheid EN 13501-1 (B-s1, d0), BS 5867 part 2 type B, GB 8624 B1, DIN 4102 B1, NFPA 701, AS/NZS 1530.3 (0-0-0-1). (Op aanvraag sturen wij u graag een kopie van het testrapport).

Onderhoud Zie de ISO symbolen. Kan schoongemaakt worden door middel van een borstel of een stofzuiger met borstelstuk op halve kracht. In het geval van serieuze vlekvorming, raden we aan contact op te nemen met een professionele reiniger.

FR

Domaine d'utilisation Store.

Description 100% polyester inherent FR. Enduit aluminium. Largeur max. 300 cm. Poids 220 g/m². Épaisseur 0.46 mm. Impression par transfert. Ecarts des coloris possibles.

Résistance à la lumière Extérieur 7-8 (ISO 105-B02).

Normes au feu EN 13501-1 (B-s1, d0), BS 5867 part 2 type B, GB 8624 B1, DIN 4102 B1, NFPA 701, AS/NZS 1530.3 (0-0-0-1). (La copie du compte rendu des tests est disponible sur demande).

Entretien Voir les symboles ISO. Le tissu peut être brossé ou aspiré avec soin (puissance d'aspiration réduite) avec un embout en forme de brosse. Dans le cas où le tissu a été fortement taché, nous suggérons de contacter un pressing professionnel.

IT

Destinazione d'uso Tende a rullo.

Caratteristiche 100% poliestere inherent FR. Rifinito sul retro con alu. Altezza max. 300 cm. Peso 220 g/m². Spessore 0.46 mm. Transfer print. Possibili differenze per colore.

Resistenza alla luce Esterno 7-8 (ISO 105-B02).

Ignifugazione EN 13501-1 (B-s1, d0), BS 5867 part 2 type B, GB 8624 B1, DIN 4102 B1, NFPA 701, AS/NZS 1530.3 (0-0-0-1). (Disponibile copia del test).

Manutenzione Per favore seguire simboli ISO. Può essere spazzolato oppure accuratamente aspirato (ridurre la potenza di aspirazione) con un ugello a spazzola. In caso di macchie considerevoli, si consiglia di contattare un lavasecco professionale.

ES

Aplicación Estor.

Descripción 100% poliéster inherent FR. Reverso de aluminio. Anchura max. 300 cm. Peso 220 g/m². Grosor 0.46 mm. Impresión digital textil. Posibles variaciones de color.

Resistencia a la luz Exterior 7-8 (ISO 105-B02).

Resistencia al fuego EN 13501-1 (B-s1, d0), BS 5867 part 2 type B, GB 8624 B1, DIN 4102 B1, NFPA 701, AS/NZS 1530.3 (0-0-0-1). (Copia del informe de ensayos disponible).

Limpieza Consulte los símbolos ISO. Se puede cepillar o aspirar con cuidado (baja intensidad de succión) con una boquilla de cepillo. En caso de manchas considerables, recomendamos contactar con un profesional de limpieza.

SE

Användning Rullgardin.

Beskrivning 100% polyester inherent FR. Aluminiumbaksida. Bredd max. 300 cm. Vikt 220 g/m². Tjocklek 0.46 mm. Transfertryck. Viss nyansskillnad kan förekomma.

Ljushärdighet Exteriör 7-8. (ISO 105-B02).

Flammskydd EN 13501-1 (B-s1, d0), BS 5867 part 2 type B, GB 8624 B1, DIN 4102 B1, NFPA 701, AS/NZS 1530.3 (0-0-0-1). (Kopia av testrapport finns tillgänglig vid förfrågan).

Underhåll Se ISO symboler. Kan borstas eller försiktigt dammsugas med ett borstmunstykke. I händelse av fläckar rekommenderar vi att du lämnar in rullgardinen till kemtvätt.

ZH

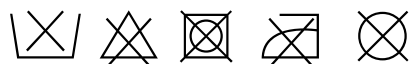
产品应用 遮光卷帘。

产品详情 100% 阻燃聚酯纤维。铝涂层背膜。幅宽：最宽300厘米。克重：220克/平方米。厚度：0.46毫米。转印。可能出现色差。

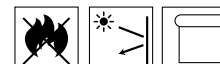
日晒色牢度 外层：7-8 (ISO 105-B02)。

阻燃级别 欧洲标准EN 13501-1 (B-s1, d0)，英国标准BS 5867 第2部分 B级， 中国标准GB 8624 B1，德国标准DIN 4102 B1， 美国标准NFPA 701， 澳洲标准AS/NZS 1530.3 (0-0-0-1)。(可提供检测报告副本)。

保养须知 请参照ISO标识。可用毛刷或毛刷吸嘴（减少吸力）小心清理。如脏污较严重，建议联系专业干洗服务。



Contact and further information kvadrat.dk



5 year warranty

Enviroscreen

The Enviroscreen collection is an extremely robust metallised screen textile. It gives a warm look due to its textile character. Enviroscreen is Cradle to Cradle certified and therefore the most sustainable choice. The textile in the Enviroscreen collection is extremely robust in construction and metallised for solar control.

The polyester yarn is woven in a new screen-like construction that combines a limited openness factor with good view to the outside. Enviroscreen provides visual and thermal comfort while maintaining a look with a textile character.

Enviroscreen is a durable product; It is formaldehyde-, Halogen-, Phthalate- and PVC free and 100% recyclable. The new Optimum material is Cradle to Cradle certified and is our most sustainable product contributing to LEED (USA) certification and Breeam (The Netherlands). In addition, Enviroscreen is the most sustainable and socially responsible choice in the field of indoor sun protection.