

203 Silverscreen 3%

Openness factor 3%
Solar reflection 82%



Specification details

Openness factor	3%
Composition	75% PVC / 25% PET, aluminium backing
Fabric width	max. 280 cm
Weight	450 g/m ²
Thickness	0.58 mm
IR emissivity metal side	0.05
Light fastness	Exterior 8 (ISO105-B02)
Fire tests	EN 13501-1 B-s2,d0, DIN 4102 B1, NFP 92503 M2, BS 5867 part 2 type B, NFPA 701
Environment	STANDARD 100 Class IV by OEKO-TEX®, HPD2.1, RoHS2, REACH, GreenGuard (LEED), GreenGuard Gold, Formaldehyde free, Phthalate free

Technical details

Colour	Optical properties acc. to EN 14500:2021 and EN 14501:2021					
	Rs (%)	Ts (%)	Tv (%)	Tuv (%)	Ra	Glare control rating
FD01 (031)	82	4	4	4	99	4 ¹
FD02 (032)	82	4	4	4	99	4 ¹
FD03 (033)	82	4	4	4	99	4 ¹
FC02 (022)	82	4	4	4	99	4 ¹
FB01 (011)	82	3	3	3	100	4 ¹
FB02 (012)	82	4	4	4	99	4 ¹
FB03 (013)	82	4	4	4	99	4 ¹

¹Cut off angle ≤65°, so upgrade with 1 class according to EN14501:2021.

Colour	Solar control double glazing G			Solar control triple glazing I		
	gtot/SHGC (%)	Utot-value (W/m ² K)	Tv, tot (%)	gtot/SHGC (%)	Utot-value (W/m ² K)	Tv, tot (%)
FD01 (031)	9.5	0.68	3	11	0.46	3
FD02 (032)	9.5	0.68	3	11	0.46	3
FD03 (033)	9.5	0.68	3	11	0.46	3
FC02 (022)	9.5	0.68	3	11	0.46	3
FB01 (011)	9.5	0.68	3	11	0.46	3
FB02 (012)	9.5	0.68	3	11	0.46	3
FB03 (013)	9.5	0.68	3	11	0.46	3

Rs: Solar reflection | **Ts:** Solar transmission | **As:** Solar absorption calculation: 100 - Rs - Ts = As

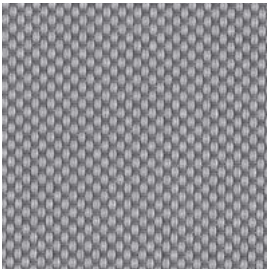
Tv: Visual light transmission | **Tuv:** UV transmission | **Ra:** Colour rendering index

Glazing G: g=33% / U=1.0 / Tv=70% (acc. to EN14501: 2021) | **Glazing I:** g=31% / U=0.6 / Tv=64% (with ref. panes acc. to EN 14501:2021)

gtot/SHGC: Solar heat gain through total fenestration | **Utot:** Thermal heat loss (or gain) through total fenestration

Tv, tot: Total light transmission through total fenestration

203 Silverscreen 3%



Steel Grey
FC02 (022)



Dark Grey
FB02 (012)



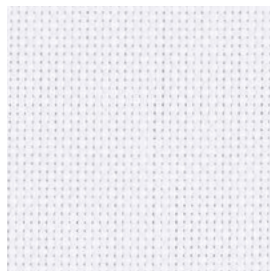
Light Grey
FD03 (033)



Brown
FB03 (013)



Beige
FD02 (032)



White
FD01 (031)



Black
FB01 (011)

